



The Cornerstone Conduit

August 2018 Newsletter

Ecosystem



The end of summer brought new opportunities and collaboration for Cornerstone.



Cornerstone Collaborative Florida, Inc. launched the **"HeartThrob" Initiative** with **Predictive Health Diagnostics**. This innovative effort will deliver mobile healthcare screening utilizing the **PULS Cardiac Test** aimed at lowering the incidents of cardiac disease, the leading cause of mortality in the United States.



Youthful Savings

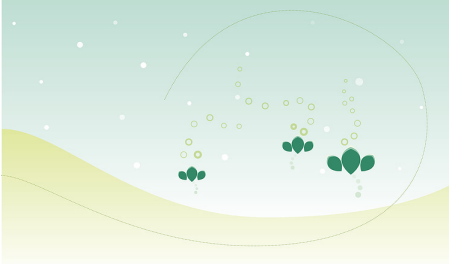
Our Ecosystem for community strengthening has grown with the addition of **Youthful Savings**, an EdTech company working towards eliminating poverty and violence in America and beyond through the power of financial education, entrepreneurship and emotional resilience.

Inspired to support our schools and community and motivated by the still recent events at Marjory Stoneman Douglas High School in Parkland, Florida, Cornerstone is participating in the **Stop the Bleed** national campaign to encourage bystanders to become trained, equipped, and empowered to help in a bleeding emergency before professional help arrives.



[Our Growing Ecosystem](#)

Click below to Join Us!



[CONTACT US](#)

Community Engagement

Across Florida



Cornerstone Collaborative Florida's network of caring individuals and committed organizations directly engages the most vulnerable populations and people most in need of support for education, training, employment, legal advocacy, housing, health, nutrition, wellness, and whose underserved communities need immediate and sustainable economic development.

Orlando - In addition to our ongoing support to public safety initiatives, we are developing a Corporate Social Responsibility strategy to engage mid-sized and large businesses to achieve their objectives in serving the communities in which they operate. We have begun a dialogue with a regional chamber of commerce to further outline a collaborative approach to social engagement.



Tampa - Our Board has been strengthened with the addition of Darlene Hill. Ms. Hill is a Human Resources professional with over fifteen years of progressive HR experience. She has worked in a variety of industries and with organizations of multiple sizes. Her experience includes payroll and benefits and more recently delivering coaching, leadership and development to management teams. She is a native of St. Thomas, U.S. Virgin Islands and lives in the Tampa area.

West Palm Beach - We have begun the planning phase of an entrepreneurship program geared to Hispanic communities in Florida. We are exploring potential partnerships to align this



effort with family strengthening, adult education, and workforce development programs.

Ft. Lauderdale - During the past month, our efforts have included meetings with county government to expand and strengthen literacy for youth and adult learners. We are working toward the launch of a community-based, humanities reading initiative in the coming months. The endeavor to improve vocabulary, reading, and comprehension will feature mentoring and entrepreneurship as key elements of its design for success.



Tallahassee - Business-Strategist Stephanie Raines explains that "think tanks are platforms for creating and implementing solutions for social, economic, political and health problems, among others." We are developing strategy to influence legislation and public opinion working with key stakeholders from across the state. Our work is underway to collaborate with higher education institutions to develop research and reports in support of our approach to effect change and communicate with people who are interested in ending poverty and reducing violence in Florida.

Share your ideas to Help!

[CONTACT US](#)



Finance

Our funding model relies on charitable support as part of our mix of revenue sources which



Orlando
Tampa
West Palm Beach
Ft. Lauderdale
Miami
Jacksonville
Gainesville
Daytona Beach
Ocala
Tallahassee

consists of:

- Individual gifts and donations
- Foundation, corporate, and government funding.
- Advisory and consulting fees
- Program service income

Our annual fund campaign is underway toward our goal of \$25,000

Join the monthly giving program to support our current initiatives to address community health (HeartThrob), promote youth and adult literacy (Fresh B'Read), and support public safety and workforce development (Uncornered Thought), to name a few.

Your contribution supports the development of innovative pathways and advocacy to provide positive outcomes for poor and vulnerable people in Florida.

Click below to Support Us!

[▶ Donation](#)

Cornerstone Collaborative Florida, Inc | 561-413-3389 | Corp. HQ - West Palm Beach, FL
| www.cornercollab.org

